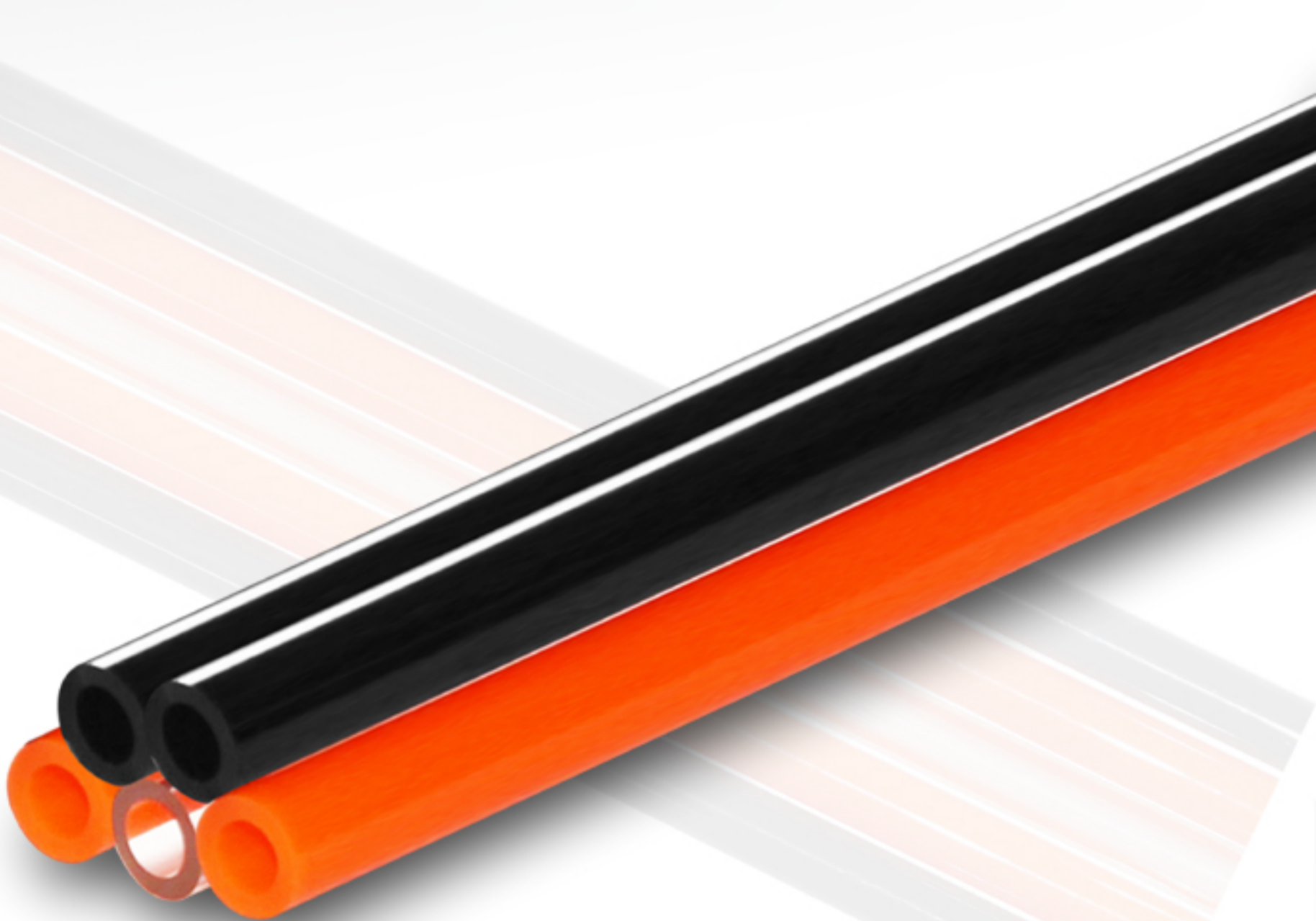
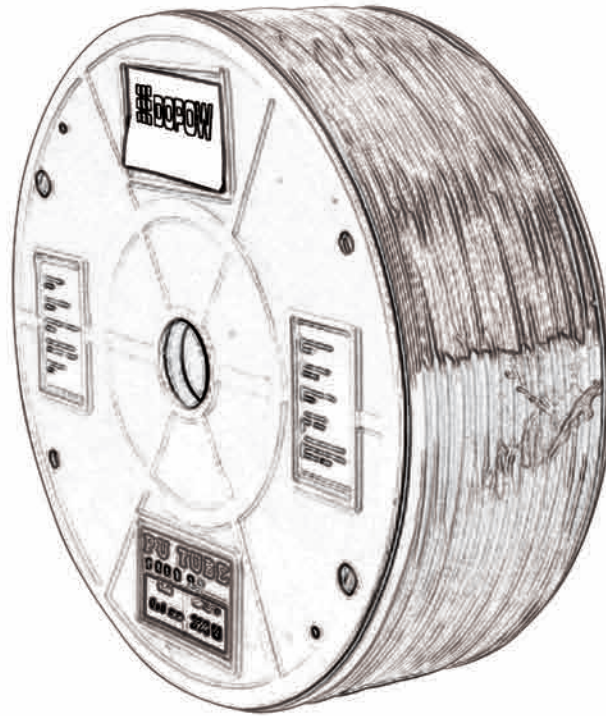




# Pneumatic Tubing, Air Tubing, Air Hose



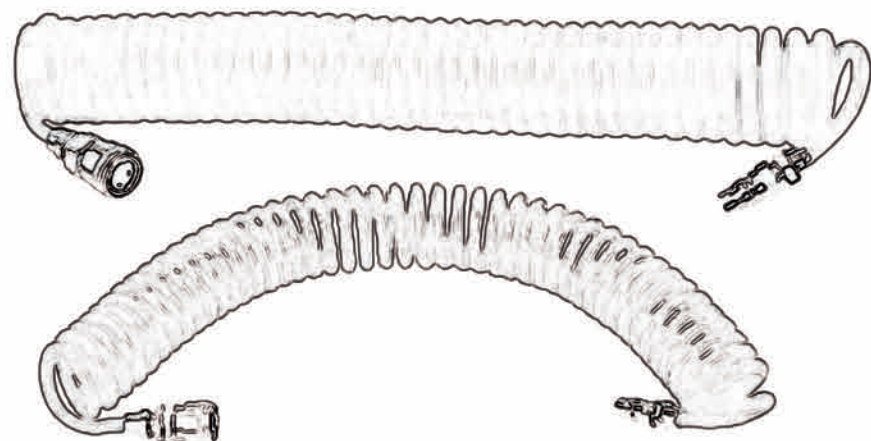


## How to Order

<b>PU</b>	<b>08</b>	<b>05</b>	<b>RED</b>
Series code	Tube O.D.	Tube I.D.	Color
	4	2.5	red
	5	3	white
	6	4	blue
	8	5	black
	8	6	
	10	6.5	
	10	8	
	12	8	
	12	10	
	16	12	

## Specification

Model	PU-0425	PU-0503	PU-0604	PU-0805	PU-0806	PU-1065	PU-1008	PU-1208	PU-1210	PU-1613
Fluid	Air, water, noncorrosive oil									
Operating pressure	8~10kgf/cm <sup>2</sup>									
Ambient & fluid temperature	-20~+60°C									
Tube O.D.	4	5	6	8	8	10	10	12	12	16
Tube I.D.	2.5	3	4	5	6	6.5	8	8	10	13
Length (m)	200	200	200	100	100	100	100	100	100	100
Min. curvel sem-dia	10	12	15	15	20	27	35	37	37	60
Burst pressure (kgf/cm <sup>2</sup> )	10	24	24	24	24	24	24	24	24	24
Weight (kg)	2.5	4.1	4.5	4	3.6	6.6	4.3	8.6	6.8	9.1



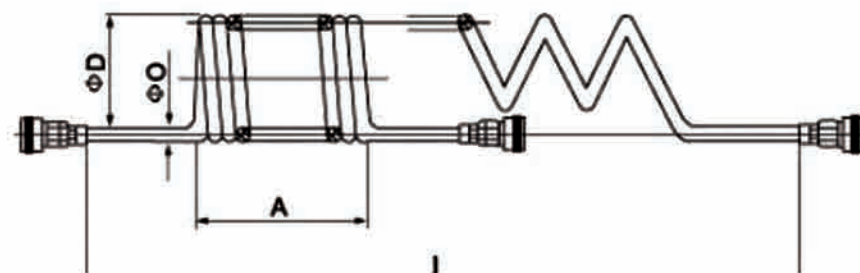
### How to order

<b>CLW</b>	<b>08</b>	<b>05</b>	<b>-</b>	<b>9</b>	<b>RED</b>
Series code	Tube O.D.	Tube I.D.		Length	Color
4	3	2.5		3m	red
5	3	3		6m	white
6	4	4		7.5m	blue
8	5	5		9m	black
8	6	6		12m	
10	6.5	6.5		15m	
10	8	8			
12	8	8			
12	10	10			
16	13	13			

### Specification

Fluid	Air, water, noncorrosive oil
Operating pressure	8~10kgf/cm <sup>2</sup>
Ambient & fluid temperature	-20~60 °C

### Dimension



Model	L(mm)	A(mm)	D(mm)
CLW-0640	3	3	35
	6	6	35
	7.5	7.5	43
	9	9	43
CLW-0850	3	180	46
	6	330	46
	7.5	400	54
	9	400	54
	12	560	60
	15	660	60
CLW-1065	20	765	72
	3	108	66
	6	400	66
	7.5	560	64
	9	420	64
	12	660	65
CLW-1280	15	780	80
	3	108	82
	6	360	82
	7.5	460	80
	9	530	82
	12	700	82
	15	870	82